

SCENE

WRITTEN BY KELSEY OGLETREE

PROPER ENGLISH

KENSINGTON WALK BY ZOFFANY

WRITTEN BY KATE ABNEY



When Zoffany design lead Peter Gomez set out to create Kensington Walk, the brand's latest collection of textiles and wallcoverings, he didn't need to look far. As a champion of emerging creatives, he first turned to an artist he'd worked with before, Royal College of Art alum Sam Wilde. It was Wilde's drawings of koi carp (like those seen in the exotic Kyoto Gardens of Kensington) that got his wheels turning. The result was Eastern Palace (shown

far left), a pattern taking its cues from the neighboring Japan House London and depicting the Asian nation's main islands guarded by fauna and native botanicals. Tucked away from the flurry of urban life, yet still touting the perks of it, Kensington "carries within it a sense of escapism—a real, refined luxury we wanted to capture," Gomez says. The collection's remaining SKUs thus sprung from the West London enclave's many storied sites. There is Cope's Trail, a Jacobean floral partly inspired by the late Holland House; Long Water, an abstracted botanical based on scenery of Hyde Park; and Persian Tulip (shown left), pulling from the ornamented Arab Hall at Leighton House. If Kensington Walk sounds diverse, then so is Kensington, a melting pot of a community historically home to artists from all corners of the globe, much like Zoffany. "The English aesthetic," Gomez explains, "is very much borrowed from worldly influences that did not originate in the U.K." zoffany.com



OPEN HOUSE

HERMAN MILLER

Herman Miller, which recently merged with Knoll, is having a big moment. Its newly opened five-story digs in Fulton Market encompasses retail, showroom and exhibition space. Here's how to visit. hermanmiller.com

View: Trade customers can get up close with Herman Miller's human-centric approach to design on floors two and three. Explore office pieces such as customizable workstations from Geiger on floor four, and one

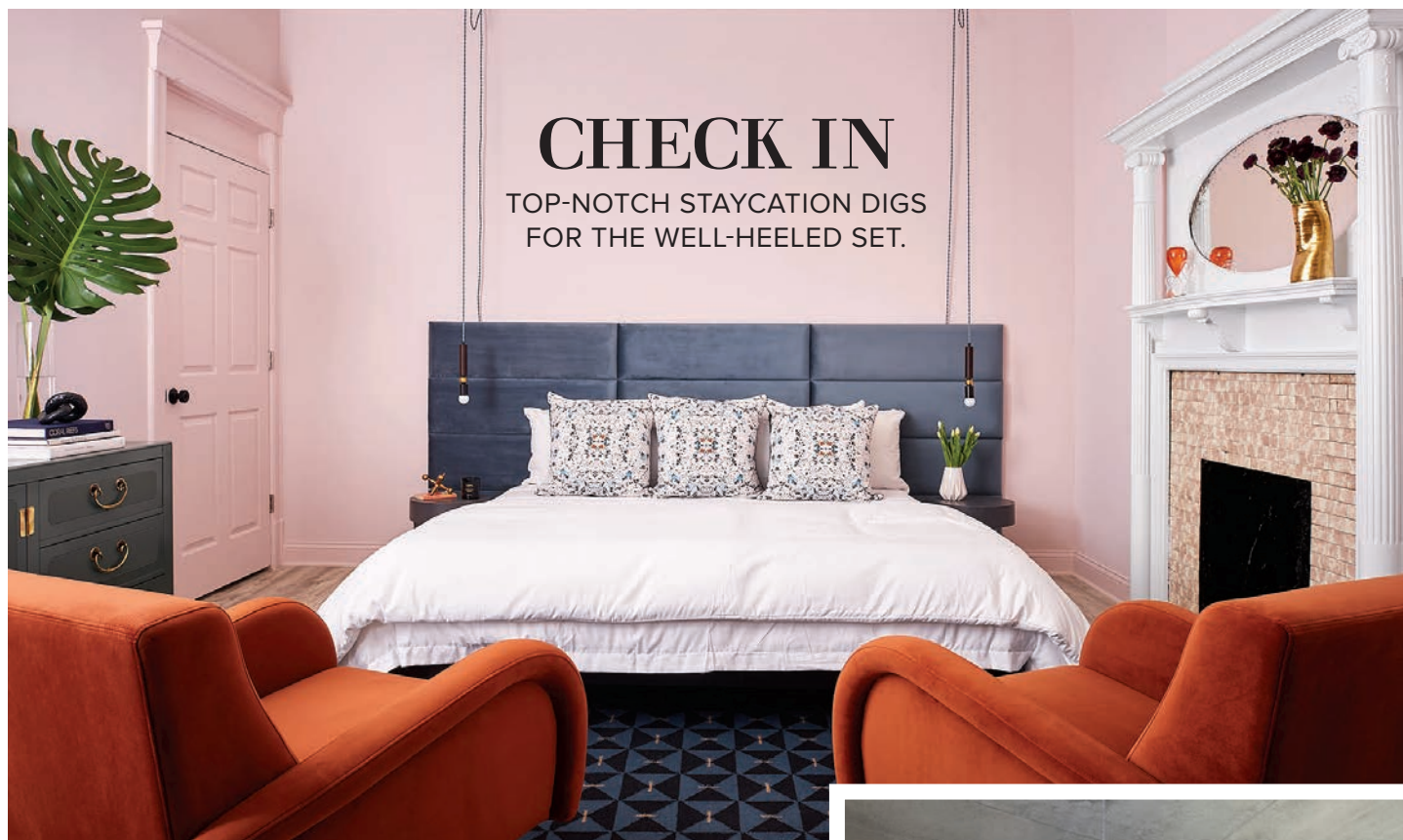
level up, architect Neil Logan designed a minimal showroom for Maharam's colorful textiles.

Shop: Design Within Reach, HAY and Herman Miller shops are side by side, showcasing product assortments from multitasking furniture to productivity-enhancing accessories, books and decor.

Meet: The Eames Pavilion on the third floor features a library, exhibition space and an outdoor terrace.



PROPER ENGLISH PHOTOS: COURTESY ZOFFANY.
OPEN HOUSE PHOTO: COURTESY HERMAN MILLER.



KING & QUEEN SUITE PHOTO: RYAN McDONALD. PENINSULA SUITE PHOTO: COURTESY THE PENINSULA CHICAGO. SAKE SUITE PHOTO: COURTESY NOBU HOTEL CHICAGO.

KING & QUEEN SUITE

You guessed it—the top room category at the recently opened Neighborhood Hotel in Lincoln Park is fit for royalty, albeit the more modern, Harry-and-Meghan type. This boutique property by Rebel House Interior Design is in an 1893 historic building and features only 14 suites, creating a private experience that serves as a base camp for city exploration. Inside King & Queen, which sleeps six guests and has two full baths, happy pops of color everywhere from the walls to the pillows create a cheerful, peppy vibe—and that's to say nothing of the snacks. Find a stocked kitchen (or request a private chef) to cook a meal in your full kitchen, then lounge by the fireplace. theneighborhoodhotel.com

PENINSULA SUITE

This ultra-private 3,600-square-foot space on the 18th floor of the Peninsula Chicago received a contemporary face-lift from designer Bill Rooney last fall.

Immense windows let in abundant natural light, illuminating a luxurious dining room with a Murano glass chandelier. In the large living room, relax among gilded walls, a fireplace and baby grand piano. Three bedrooms accommodate larger families, while the thoughtful study features Bubinga wood furnishings and a custom leather desk equipped with all your work-from-hotel needs.

Outside, the suite's 2,000-square-foot wraparound terrace is the ideal summer hangout. peninsula.com/chicago



SAKE SUITE

Oases of sophistication in the industrial design-heavy West Loop, the four Sake Suites at Nobu Chicago—designed by Studio K—challenge the rules of hotel design with Venetian plastered walls, wood floors and high exposed ceilings balanced by low furniture. Accents like sisal and wool rugs and mango wood millwork are a texture lover's dream, emphasizing natural materials with Japanese roots. Surprising details like chicken-wire glass doors entering the bathroom add an unexpected touch that culminates in a space that's at once calm, contemporary and opulent. chicago.nobuhotels.com



ART FOR LIVING

KRISTI KOHUT

Kristi Kohut spent her 20s in advertising before getting back to her roots, paintbrush in hand, after her son was born in 2007. "I've always connected to the world of color and art," she says. Before long, her amateur studio was filled wall-to-wall with canvases—and she knew it was time to share her craft with the world. She launched Hapi Art seven years ago on the idea that bold art brings joy, and as her business has grown, she's expanded into textiles, wallpaper and home decor and opened a studio and showroom in Libertyville. *Luxe* sits down with Kohut to talk business and pleasure. hapiart.com

How is your business model different?

The high-end art world has been an intimidating, inaccessible market for too long. From the beginning, I set out to do things differently and to connect one-

on-one with potential collectors. So, I made my original art and fine art prints available online through my website, Instagram and various media outlets.

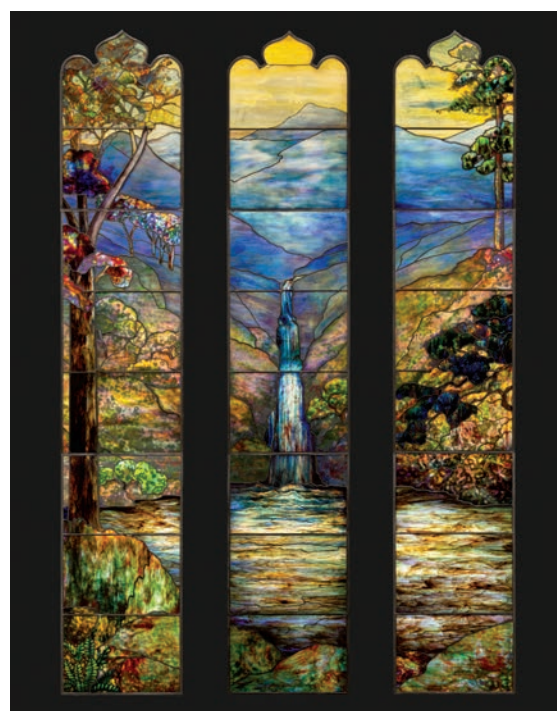
Where do you feel most creative? My studio is my happy space for creating. The crunch of fallen glitter on the floor greets me every morning. And nature is my muse. From the sunlight glittering on blue water to the intricate pattern on a butterfly's wings or the rainbow stripes on an exotic mushroom, they all feed into my creative process.

Anything new we can expect from you this year? I'm working on a series of prints inspired by nature's symmetry and vibrant color palettes, along with a new 3D Bloom collection that will flow like the growth of a vine, with hand-cut collaged flowers and elements seeming to grow from an organic form.

ON VIEW

HARTWELL MEMORIAL WINDOW

In May, the Art Institute of Chicago added yet another reason to revisit one of the city's greatest treasures. *Hartwell Memorial Window*, designed by Agnes F. Northrop more than a century ago for Tiffany Studios, was relocated from its former home at the Community Church of Providence in Rhode Island to the museum, where it will remain on public view. "Acquiring the *Hartwell Memorial Window* is a once-in-a-lifetime opportunity; it's one of the most extraordinary leaded-glass windows ever made by Tiffany Studios and showcases the artistry and vitality of stained glass," shares curator Elizabeth McGoey. Composed of 48 panels, each made up of different glass types and combinations, the one-of-a-kind piece depicts majestic scenes in nature—the sun setting over a mountain, flowing water, light dancing through the trees. Visit the window in the Henry Crown Gallery near the Michigan Avenue entrance whenever you need a boost of inspiration. artichicago.edu



ART FOR LIVING PHOTOS: ARTWORK, COURTESY HAPI ART; PORTRAIT, BY CHELSEA MAZUR. ON VIEW PHOTO: COURTESY THE ART INSTITUTE OF CHICAGO. FIND THE FULL LIST OF GENEROUS SUPPORTERS OF THE TIFFANY WINDOW AT ARTIC.EDU.